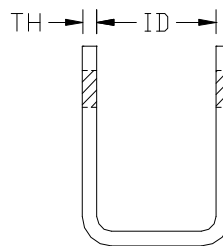
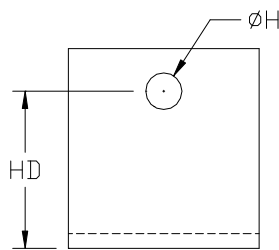
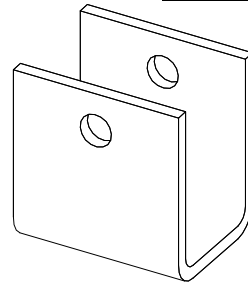
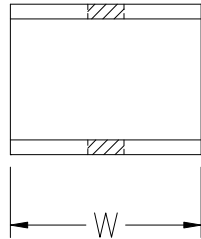




# SPRING HANGER PRODUCTS AS OF 12/1/2008

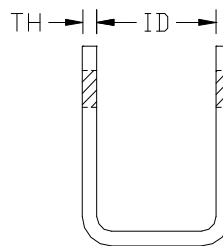
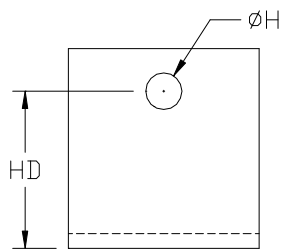
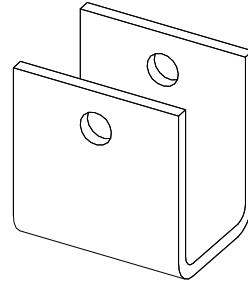
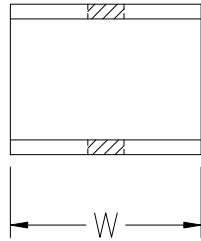


PART#	HD	ID	W	TH	H
PS-HR1	1.125"	1.435"	1.5"	0.220"	0.570"
PS-HR2	1.5"	1.875"	3"	0.220"	0.570"
PS-HR3	3.25"	1.875"	3"	0.220"	0.570"
PS-HR4	4.25"	1.875"	3"	0.220"	0.570"
PS-HR5	4.3"	2.125"	3"	0.220"	0.570"
PS-HR6	1.25"	1.435"	3"	0.220"	0.570"
PS-HR7	1.25"	1.875"	3"	0.220"	0.570"
PS-HR8	2.438"	1.875"	3"	0.220"	0.570"
PS-HR9	4.25"	1.875"	2.5"	0.300"	0.570"
PS-HR10	2.438"	1.875"	2.5"	0.300"	0.570"
PS-HR11	1.938"	1.875"	2.5"	0.220"	0.570"
PS-HR12	3.5"	1.875"	2.5"	0.220"	0.570"
PS-HR13	4.75"	1.875"	2.5"	0.300"	0.570"
PS-HR14	1.938"	1.875"	2"	0.220"	0.570"
PS-HR15	2"	1.875"	3"	0.220"	0.570"
PS-HR20	3.88	2.25"	3"	0.31"	0.570"
PS-HR21	3.52	3.00"	3"	0.25"	0.900"

**NOTE: PS-HR11, 12, 13, & 14 have radius ends.**



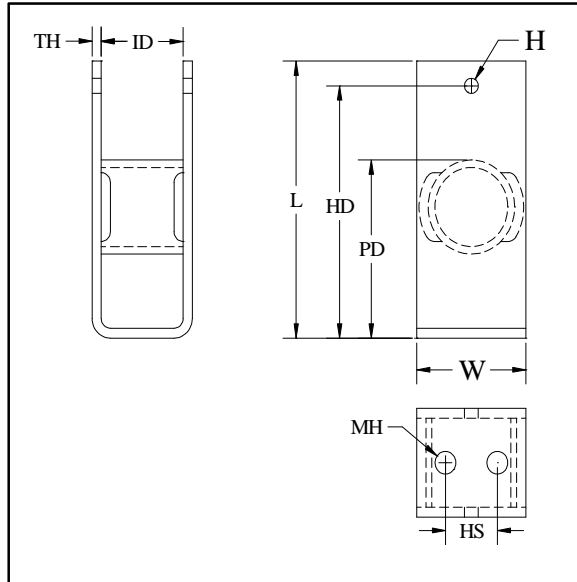
# SPRING HANGER PRODUCTS AS OF 12/1/2008



PART#	HD	ID	W	TH	H
PS-HR22	3.56"	2.188"	4"	0.300"	0.570"
PS-HR24	3.375"	3.125"	4"	0.375"	0.900"
PS-HR25	3.56"	2.188"	3"	0.300"	0.570"
PS-HR27	3.375"	3.125"	3"	0.375"	0.900"
PS-HR28	3.375"	3.125"	4"	0.300"	0.900"
PS-HR29	3.64"	2.188"	4"	0.375"	0.570"
PS-HR32	2.50"	2.620"	7"	0.250"	0.813"
PS-HR33	4.37"	3.250"	5"	0.375"	1.060"
PS-HR34	5.38"	1.810"	3"	0.375"	0.750"



## WELDED HANGERS AS OF 12/1/2008



PART#	L	H	W	HD	PD	MH	HS	ID	TH
PS-HR16	6.05	0.38	3	5.43	3.75	0.57	1.43	2.25	0.25
PS-HR17	5.63	0.57	3	5.00	2.88	0.57	1.43	2.25	0.25
PS-HR18	5.53	0.90	3	4.50	2.48	0.57	1.43	3.06	0.31
PS-HR19	7.06	0.38	3	6.43	4.82	0.57	1.43	2.25	0.25
PS-HR23	6.00	0.57	4	5.06	3.44	0.57	1.5	2.187	0.30
PS-HR26	6.00	0.57	3	5.06	3.44	0.57	1.5	2.187	0.30
PS-HR30	6.08	0.57	4	5.14	2.56	0.57	1.5	2.187	0.38
PS-HR31*	7.00	\	4.5	\	3.5	\	\	2.62	0.25

\*10K Rear Hanger – Unique Design