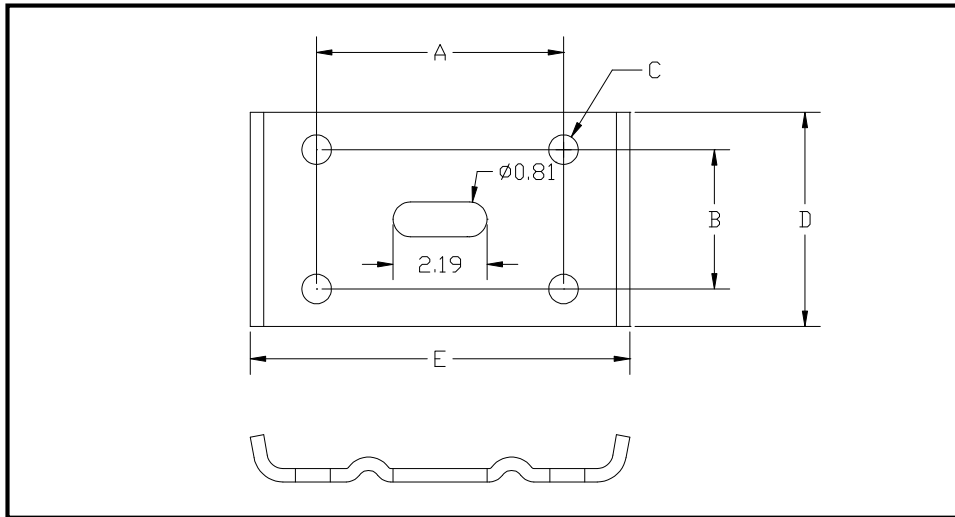




## RIBBED TIE PLATES AS OF 12/1/2008



PART#	A	B	C	D	E
PS-TP08	5.77	3.25	.69	5.00	9.1
PS-TP09	5.94	3.38	.81	5.00	9.1
PS-TP10	5.75	3.88	.69	6.00	9.1
PS-TP11	5.88	3.88	.81	6.00	9.1